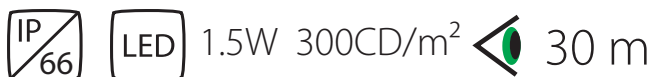




SPECIFICATIONS & ACCESSORIES

Housing:	1.5 mm Stainless steel EN1.4404. Ventilated
IP66	
Front:	3 mm PC long life UV-resistant, self extinguishing, anti-graffiti laminated
Light source:	LED 4000K
Luminance:	300 cd/m ²
Consumption:	1,5 W
Cable:	Radox 125 2x0,75mm ² . Self extinguishing EN50363, IEC60332-1, IEC60332-3 3 m
Drivers:	(See appendix A) Model 91 Individual (Fused, wiring thru) Model 24 Groups
Mounting	See backside
Options:	Powder coated



ONYX INFRA 5020S

Escape route sign LED

Designed for infra structure instalments.

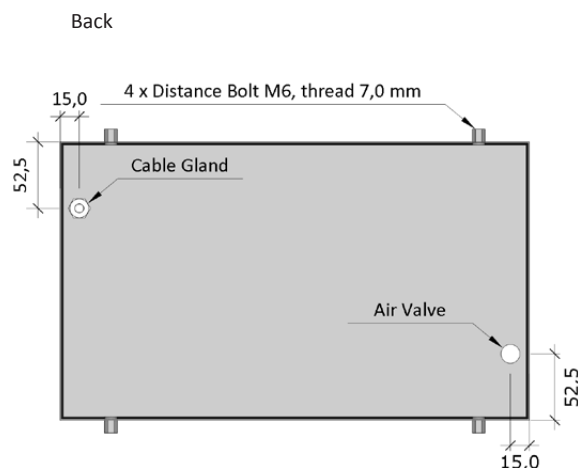
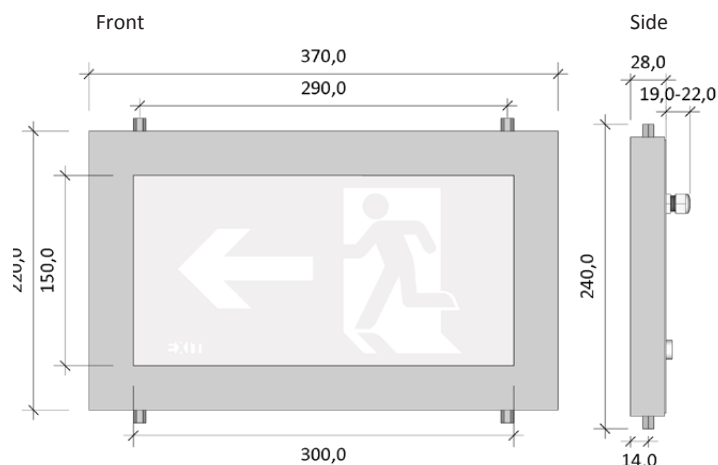
Housing in stainless steel EN 1.4404 and front in UV resistant, self extinguishing polycarbonate with laminated easy-to-clean protection.

IP66.

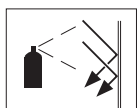
Single sided. High luminance

Central supply 230V AC/DC. Driver can be individual (Driver 91) or for groups (Driver 24).

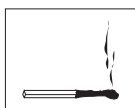
CE branded. Made in Sweden



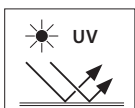
ROBUST



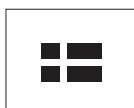
ANTI-GRAFFITI
LAMINATED



SELF
EXTINGUISHING



UV- RESISTANT



MADE IN
SWEDEN

Technical specifications

19703 WALL BRACKET

FUNKTION Mounting on surface, semi-recessed or recessed.

MATERIAL 2 mm stainless steel EN1.4404



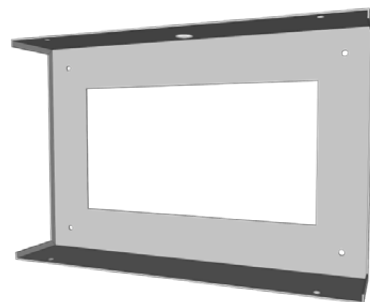
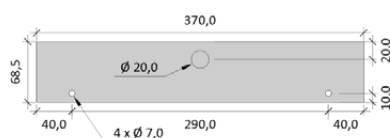
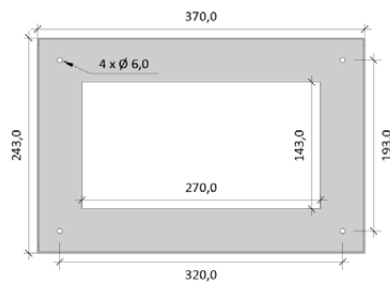
Surface



Semi-recessed.
Measure for insertion
380x250x35 mm



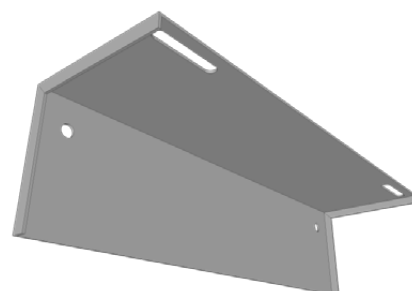
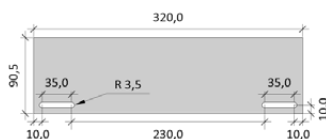
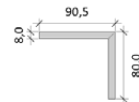
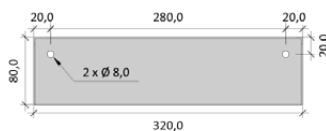
Recessed. Measure
for insertion
380x300x70 mm



19704 WALL BRACKET D

FUNKTION Mounting on wall, Offers space behind the luminaire to install driver 91

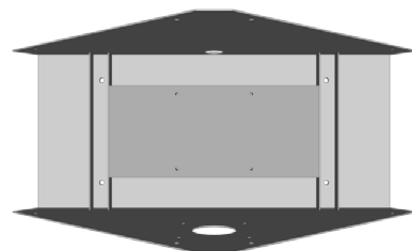
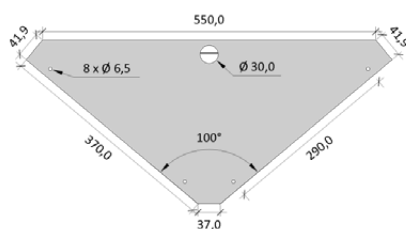
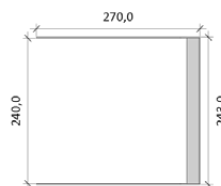
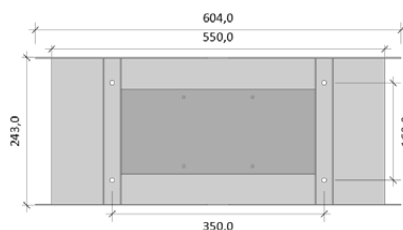
MATERIAL 2 mm stainless steel EN1.4404



19704 WALL BRACKET D

FUNKTION Fits 2 luminaires 5220S in 100° angle to provide visibility from all directions. Prepare for optional fixing of beacon 5310.

MATERIAL 2 mm stainless steel EN1.4404



ALTERNATIVE

- 19701 Mounting loops for wire suspension
- 19706 Ceiling bracket flex
- 19707 Ceiling bracket rigid